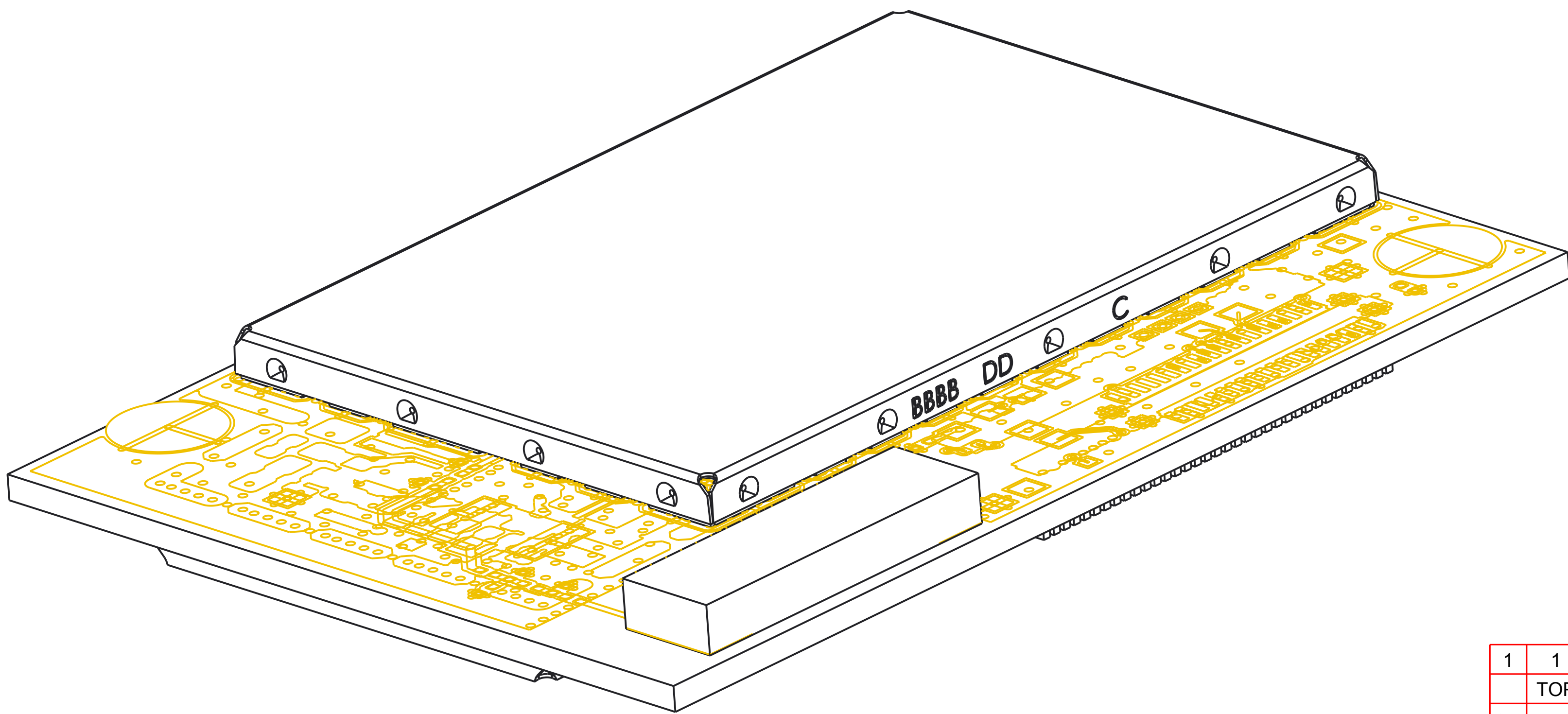
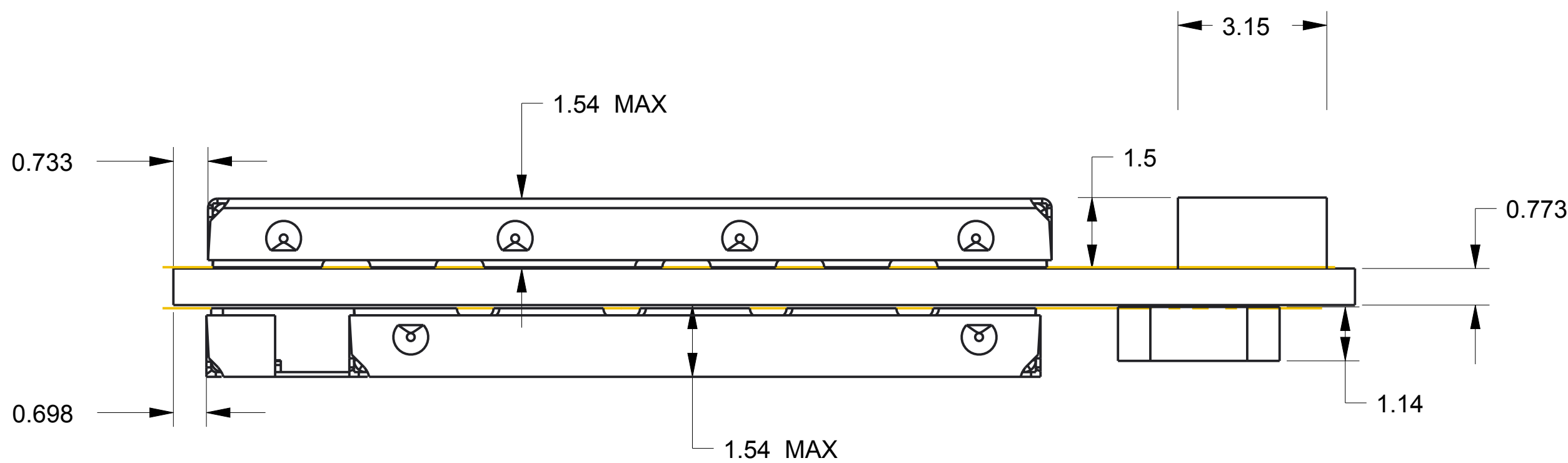
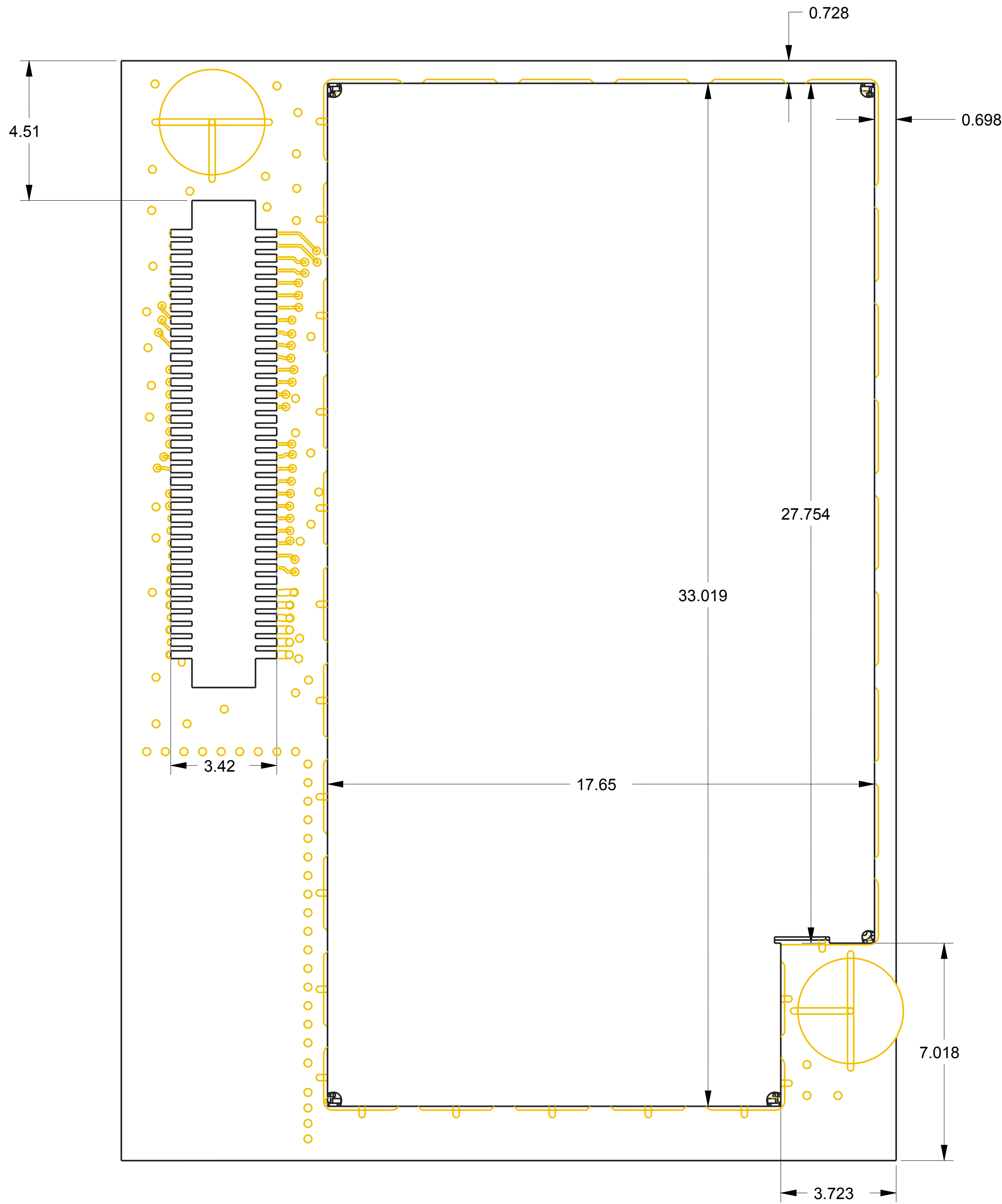
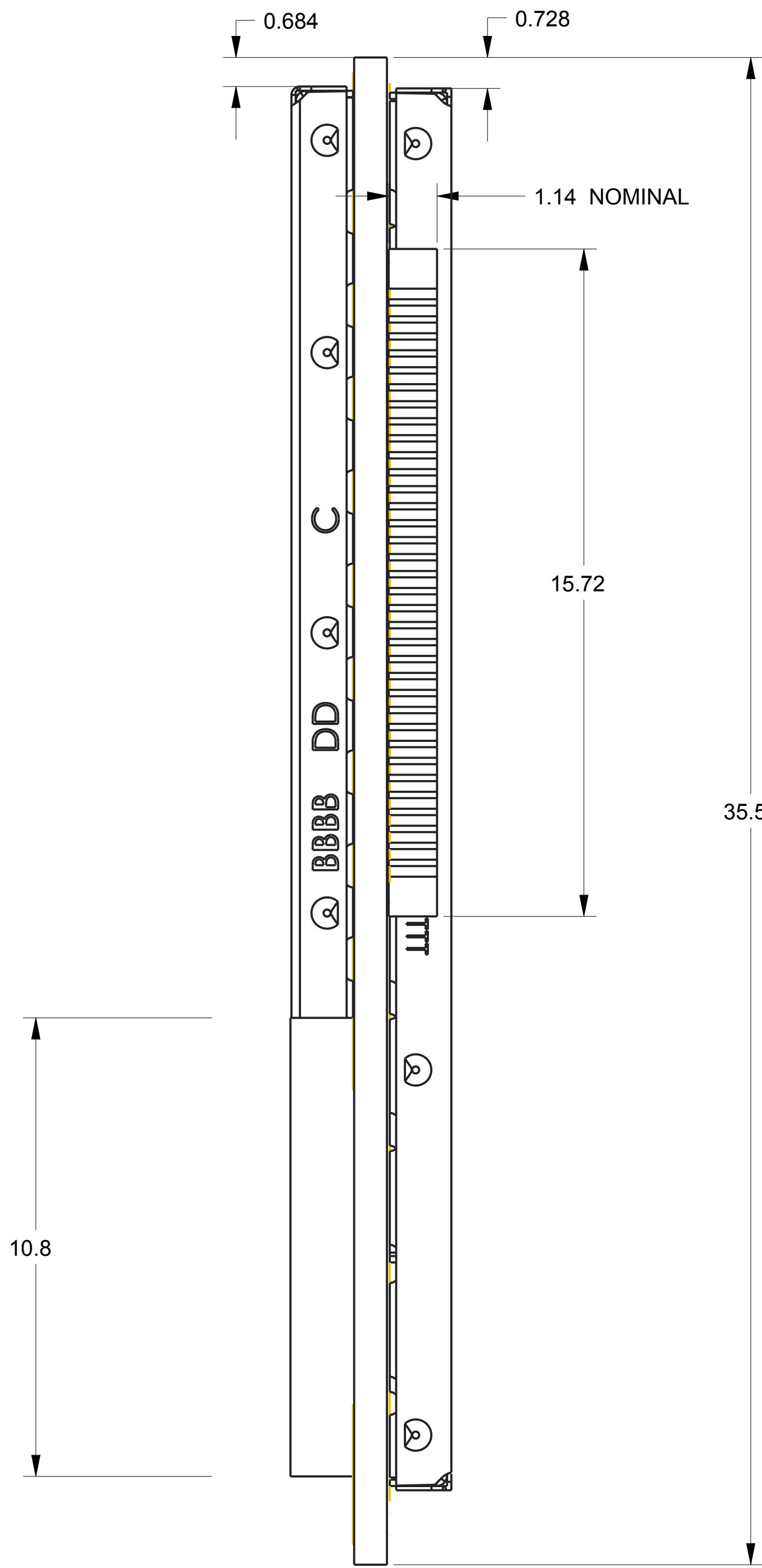
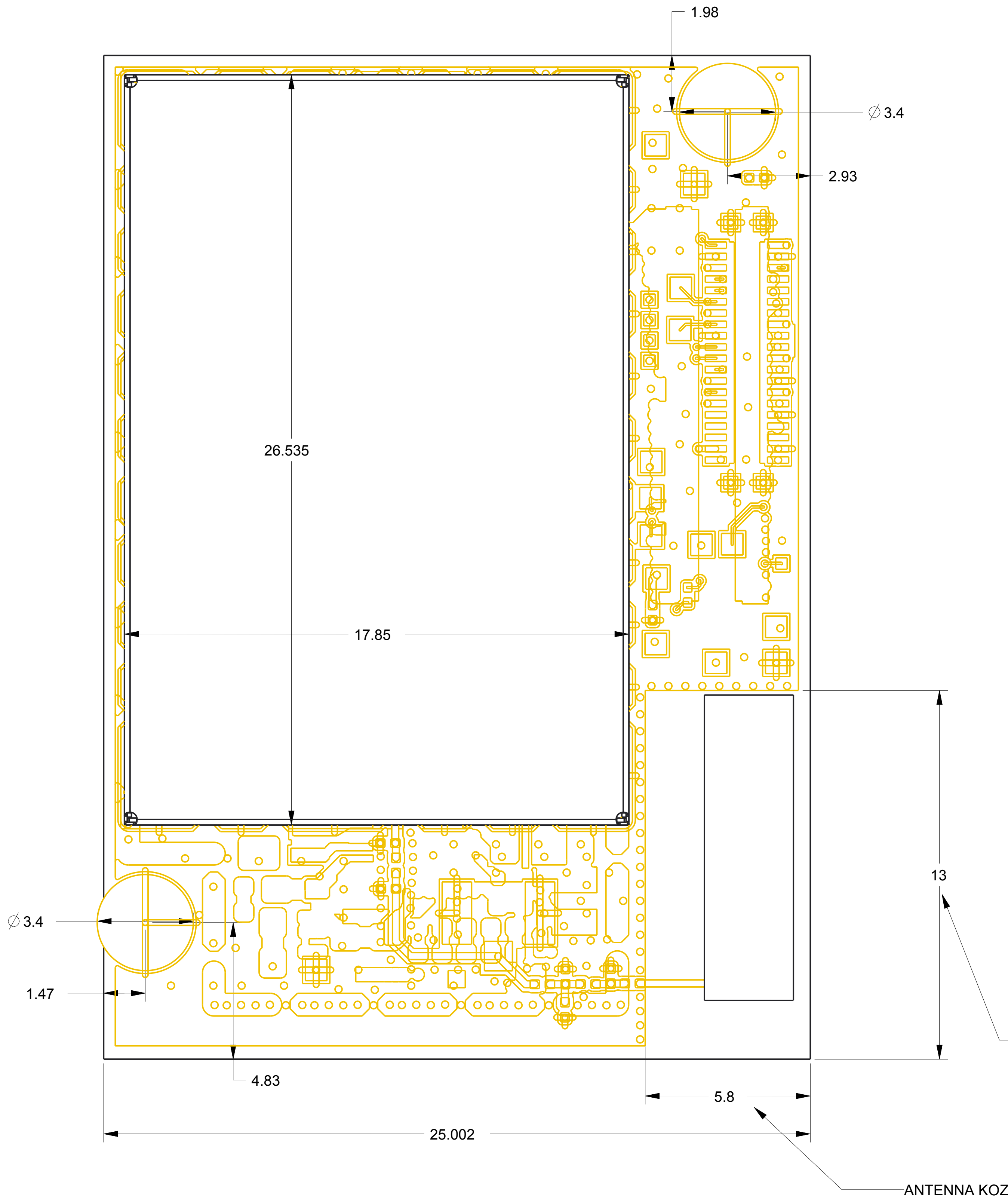
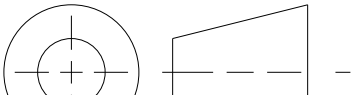



This Intel® Edison design document is licensed by Intel under the terms of the Creative Commons Attribution Share-Alike License (ver. 3), subject to the following terms and conditions. The Intel® Edison design document IS PROVIDED "AS IS" AND "WITH ALL FAULTS." Intel DISCLAIMS ALL OTHER WARRANTIES, EXPRESS OR IMPLIED REGARDING THE EDISON DESIGN OR THIS EDISON DESIGN DOCUMENT INCLUDING, BUT NOT LIMITED TO, ANY IMPLIED WARRANTIES OF MERCHANTABILITY OR FITNESS FOR A PARTICULAR PURPOSE. Intel® may make changes to the specifications, schematics and product descriptions at any time, without notice. The Customer must not rely on the absence or characteristics of any features or instructions marked "reserved" or "undefined." Intel® reserves these for future definition and shall have no responsibility whatsoever for conflicts or incompatibilities arising from future changes to them. ENJOY!

- NOTES:
1. THERE IS AN ANTENNA KOZ AT BOTTOM RIGHT IN TOP VIEW.
 2. THE HEIGHT OF LIDS IS 1.54 MM MAX FROM THE BOARD SURFACE.



1	1	ASM0017	
TOP		H38489-003_R01	-
QTY	ITEM NO	PART NUMBER	DESCRIPTION
PARTS LIST			
<div>UNLESS OTHERWISE SPECIFIED INTERPRET DIMENSIONS AND TOLERANCES IN ACCORDANCE WITH ASME Y14.5M-1994 DIMENSIONS ARE IN MILLIMETERS ALL UNTOLERANCED LINEAR DIMENSIONS ±0.1 ANGLES ±0.5</div>		DESIGNED BY	DATE
		DRAWN BY	DATE
		CHECKED BY	DATE
		APPROVED BY	DATE
THIRD ANGLE PROJECTION		MATERIAL	FINISH
		SEE NOTES	SEE NOTES

DEPARTMENT		5200 NE ELAM YOUNG PKWY HILLSBORO, OR 97124
TITLE		
EDISON H383485-300		
SIZE	DRAWING NUMBER	REV
A0		0
SCALE: 10	DO NOT SCALE DRAWING	SHEET 1 of 1